

PRODUCT INFORMATION PACKET

Model No: 324TTDC6029
Catalog No: E764A
40,1800,DP,324T,3/60/575
Open Drip Proof (ODP)



Regal and Marathon are trademarks of Regal Beloit Corporation or one of its affiliated companies.
©2018 Regal Beloit Corporation, All Rights Reserved. MC017097E





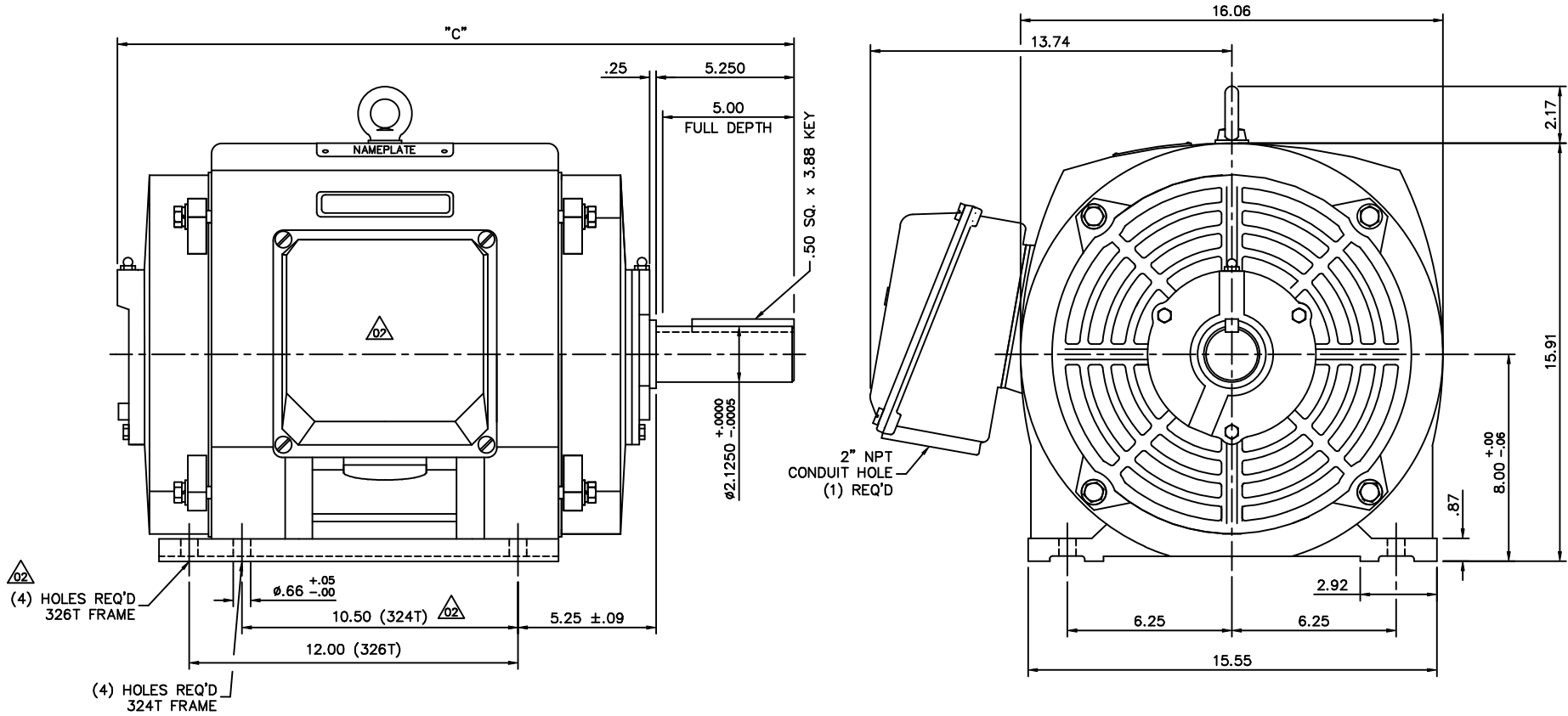
Nameplate Specifications

| | | | |
|----------------------------|-------------------|------------------------|-------------------|
| Output HP | 40 Hp | Output KW | 30.0 kW |
| Frequency | 60 Hz | Voltage | 575 V |
| Current | 38.5 A | Speed | 1780 rpm |
| Service Factor | 1.15 | Phase | 3 |
| Efficiency | 94.1 % | Duty | Continuous |
| Insulation Class | F | Design Code | B |
| KVA Code | G | Frame | 324T |
| Enclosure | Drip Proof | Overload Protector | No |
| Ambient Temperature | 40 °C | Drive End Bearing Size | 6312 |
| Opp Drive End Bearing Size | 6312 | UL | Recognized |
| CSA | Y | CE | Y |
| IP Code | 12 | | |

Technical Specifications

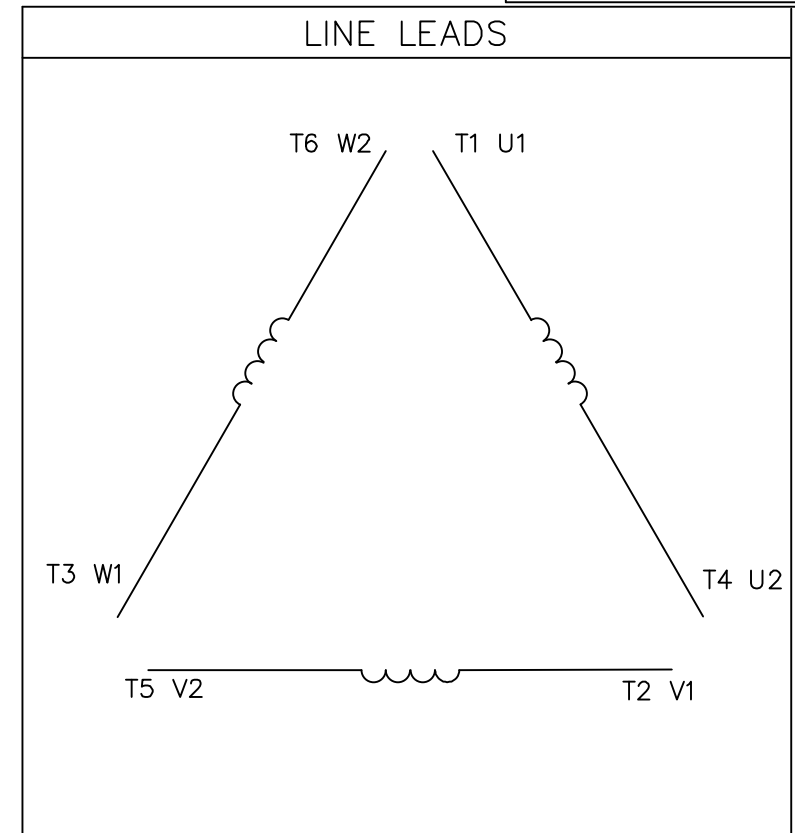
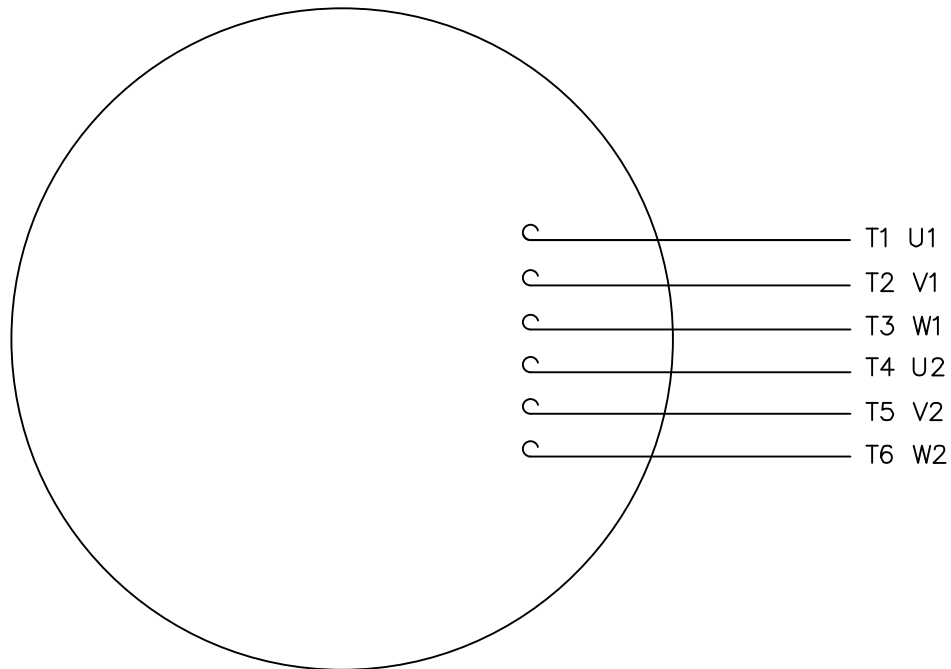
| | | | |
|-------------------|-------------------------------------|-----------------------|-------------------------|
| Electrical Type | Squirrel Cage Inverter Rated | Starting Method | Line Or Inverter |
| Poles | 4 | Rotation | Reversible |
| Mounting | Rigid base | Motor Orientation | Horizontal |
| Drive End Bearing | Ball | Opp Drive End Bearing | Ball |
| Frame Material | Cast Iron | Shaft Type | T |
| Overall Length | 26.02 in | Shaft Diameter | 2.125 in |
| Shaft Extension | 5.25 in | Assembly/Box Mounting | F1/F2 Capable |
| Outline Drawing | 16955460ME | Connection Diagram | 00519001ME |

This is an uncontrolled document once printed or downloaded and is subject to change without notice. Date Created: 06/29/2018



| | |
|--------------|-------|
| FRAME DESIGN | "C" |
| 324T | 26.02 |
| 326T | 27.52 |

| | | TOLERANCES UNLESS SPECIFIED | | LEESON | ELECTRIC MOTORS GEARMOTORS AND DRIVES | DRAWN JJK 04/05/99 |
|--|---|-----------------------------|--------------|--------|---|--------------------|
| NO. | REVISION | BY & DATE | CHK ANG | | | |
| 02 | 326T FRAME WAS 6 HOLES & REMOVE LEESON LOGO | LST 10/2/02 | .XX ±.03 | TITLE | OUTLINE 320T FRAME | SCALE 1=4 |
| 01 | REVISED TO NEW BORDER FORMAT | DWF 12/14/01 | .XXX ±.005 | MAT'L | DRIP PROOF - RIGID | REF 169518 |
| | | | .XXXX ±.0005 | | CAST IRON | FMF |
| | | | ±1/2" | FINISH | | PREV |
| THIS DRAWING IN DESIGN AND DETAIL IS OUR PROPERTY AND MUST NOT BE USED EXCEPT IN CONNECTION WITH OUR WORK ALL RIGHTS OF DESIGN AND INVENTION ARE RESERVED THIS IS AN ELECTRONICALLY GENERATED DOCUMENT - DO NOT SCALE THIS PRINT | | | | RFP | CAD FILE 16955460 | SIZE B |
| | | | | DIST | DRAWING NO. 169554-60 | REV. 02 |



| | | | | |
|----------------|--------------------|--------------------|--------------------|--------------------------|
| | L1 | L2 | L3 | JOIN |
| START (WYE) | T1 U1 | T2 V1 | T3 U2 | (T4,T5,T6) (U2,V2,W2) |
| RUN (DELTA) | (T1,T6) (U1,W2) | (T2,T4) (V1,U2) | (T3,T5) (W1,V2) | |

| | | | | | | | | | |
|----|-------------------------|--------------|-------|--------------------------------|--|---|-----------------------|-------------------|--------|
| | | | | TOLERANCES UNLESS SPECIFIED | | | | DRAWN PG 05/07/82 | |
| | | | | DEC. | INCHES | | | CHK | |
| | | | | .X | ±.1 | TITLE EXTERNAL WIRING DIAGRAM STAR START - DELTA RUN | | APPD TEM 05/07/82 | |
| 03 | ADDED IEC DESIGNATIONS | MOL 04/27/12 | .XX | ±.01 | MAT'L. Y-CONNECTED START - DELTA CONNECTED RUN | | | SCALE 1=1 | |
| 02 | REMOVED OBSOLETE STATUS | KJH 06/28/99 | .XXX | ±.005 | | | FINISH SINGLE VOLTAGE | | REF |
| 01 | REDRAWN ON CAD | DBT 05/30/97 | .XXXX | ±.0005 | NO. REVISION BY & DATE CHK ANG ±1/2' | | | | FMP |
| | | | | RFP | | | CAD FILE 00519001ME | | SIZE A |
| | | | | DIST | | | | | |

THIS DRAWING IN DESIGN AND DETAIL IS OUR PROPERTY AND MUST NOT BE USED EXCEPT IN CONNECTION WITH OUR WORK ALL RIGHTS OF DESIGN AND INVENTION ARE RESERVED THIS IS AN ELECTRONICALLY GENERATED DOCUMENT - DO NOT SCALE THIS PRINT

Data Sheet

Date: 19-06-2017
 Customer: _____
 Attention: _____
 Submitted by: FAREEDA DUDEKULA



324TTDC6029

Submittal

Data @ 575 V

Motor Load Data

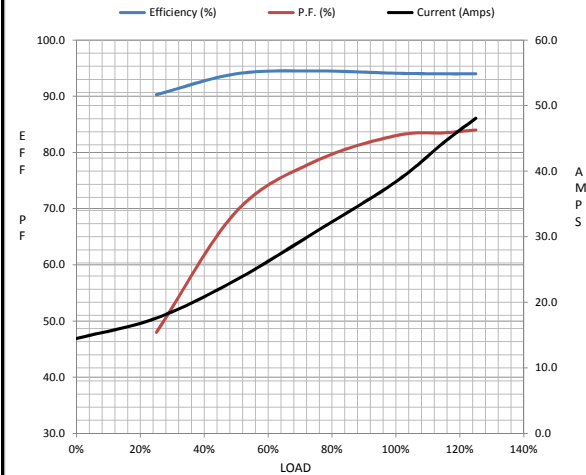
| Load | 0% | 25% | 50% | 75% | 100% | 115% | 125% | LR |
|----------------|------|------|------|------|------|-------|------|-----|
| Current (Amps) | 14.5 | 17.6 | 23.4 | 30.8 | 38.4 | 44.4 | 48.1 | 244 |
| Torque (ft-lb) | 0.00 | 30.0 | 60.0 | 90.0 | 118 | 136 | 150 | 267 |
| RPM | 1800 | 1795 | 1790 | 1785 | 1780 | 1,777 | 1775 | 0 |
| Efficiency (%) | | 90.3 | 94.0 | 94.5 | 94.1 | 94.0 | 94.0 | |
| P.F. (%) | 5.0 | 48.0 | 69.5 | 78.5 | 83.0 | 83.5 | 84.0 | 0.0 |

Motor Speed Data

| | LR | Pull-Up | BD | Rated | Idle |
|----------------|-----|---------|------|-------|------|
| Speed (RPM) | 0 | 800 | 1655 | 1780 | 1800 |
| Current (Amps) | 244 | 232 | 158 | 38.4 | 14.5 |
| Torque (ft-lb) | 267 | 227 | 322 | 118 | 0.00 |

Information Block

| | | | | |
|-----------------------------|-------------------------|--------|--------|--------|
| HP | 40.0 | | | |
| Sync. RPM | 1800 | | | |
| Frame | 324 | | | |
| Enclosure | DP | | | |
| Construction | TDC | | | |
| Voltage | 575 V | | | |
| Frequency | 60 Hz | | | |
| Design | A | | | |
| LR Code letter | H | | | |
| Service Factor | 1.15 | | | |
| Temp Rise @ FL | 45 ° C | | | |
| Duty | CONT | | | |
| Ambient | 40 ° C | | | |
| Elevation | 1,000 feet | | | |
| Rotor/Shaft wk ² | 0.00 Lb-Fl ² | | | |
| Ref Wdg | T16104018 NONE | | | |
| Sound Pressure @ 1M | 75 dBA | | | |
| VFD Rating | CONSTANT 10:1 | | | |
| Outline Dwg | 16955460-ME | | | |
| Conn. Diag | 5190.01 | | | |
| Additional Specifications: | | | | |
| 0 | | | | |
| 365THFS8036 | | | | |
| EQUIV CKT (OHMS / PHASE) | | | | |
| R1 | R2 | X1 | X2 | Xm |
| 0.0000 | 0.0000 | 0.0000 | 0.0000 | 0.0000 |



Speed -Torque Curve

